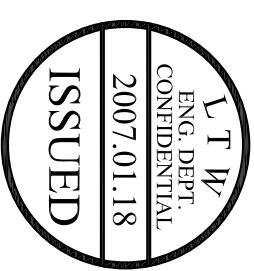
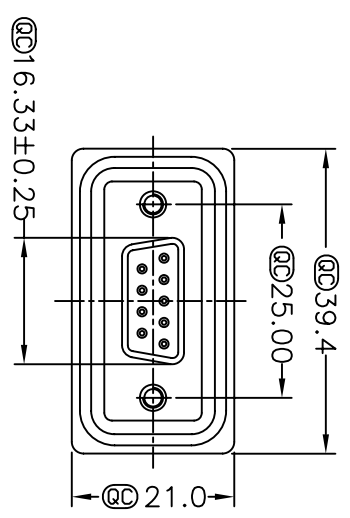
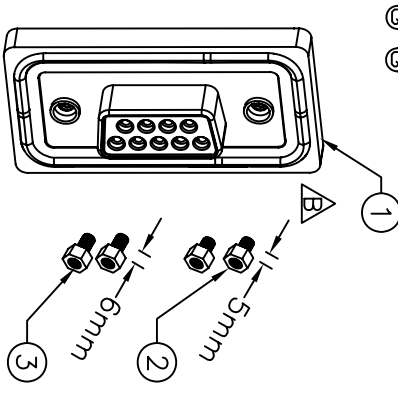
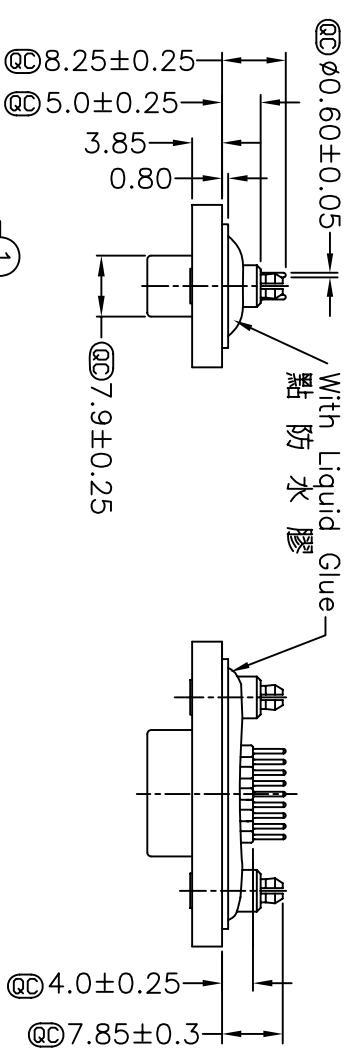


1	2	3	4	5	6	7	8
				REV. A	EON NO.	DATE	SIGN
				B	LE3-710070	2006/12/20	DongYali
						DESCRIPTION	Released Rev.A
							Move 0-Ring To ZSE00100770



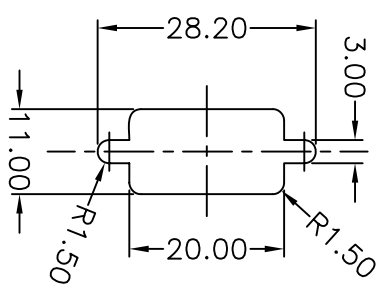
Note:
 * @Important Dimension.
 * Waterproof Rate : IP68

- * IP68:1M of depth of water 24 hours (防水等級: IP68)
- * (IP68:1米水深 24小時)
- * Do Mating Test After Glued 點膠後, 須作對插測試
- * D-SUB Conn.:Black Core , PBT
- * Plastic Jacket:Black , Nylon+GF
- * Pin:Copper Alloy , Gold Plated
- * Ring:light Blue,Silicone
- * Screw:Copper Alloy,Nickel Plated,#4-40 UNC
- * The 180° Board Lock Needs To Connect The Iron Shell 180°型支架需接鐵殼

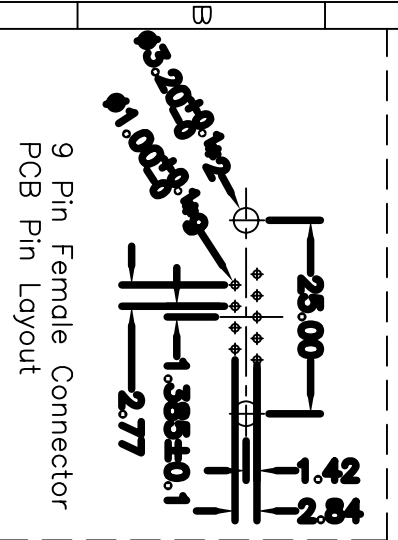
Panel Thickness
 面板厚度
 X(Max.)

Screw L=5.0 For Panel Thickness
 Under 1.2mm
 適用板厚為 1.2mm 以下

Screw L=6.0 For Panel Thickness
 Between 1.2~2.0mm
 適用板厚為 1.2~2.0mm



Recommended Panel Cut-Out
 建議挖孔尺寸



9 Pin Female Connector
 PCB Pin Layout

UNIT:mm	TITLE
TOLERANCE	D-SUB Connector 9Pin Female
.X ±0.25	For Panel,PCB 180° Board Lock
.XX ±0.1	
.XXX ±0.05	
ANGLES ±1°	
SCALE	Free
REV. B	SIZE A4
	SHEET 1 OF 1
	@: Inspection Item

LTW
 亮泰企業股份有限公司

ITEM NO	LTWSSDB-09PFFFP-SA8001	DRAWN BY	DongYali	DATE	2006/12/20
DWG NO	LTWSSDB-09PFFFP-SA8001	CHECKED BY	Simon	DATE	2006/12/20
CUSTOMER		APPROVED BY	Max	DATE	2006/12/20