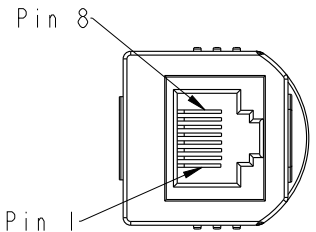
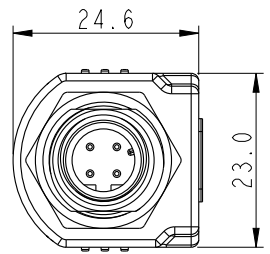
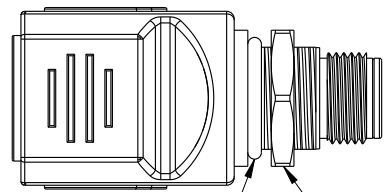
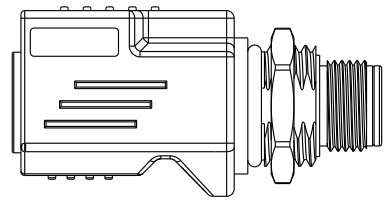


REV.	ECN NO.	DATE	SIGN	DESCRIPTION

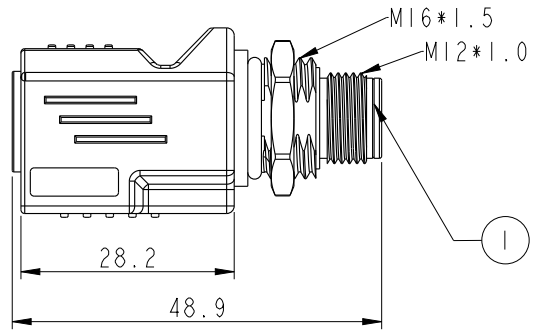
THIS DOCUMENT IS SUBJECT TO CHANGE WITHOUT NOTICE. IT IS CONFIDENTIAL AND A PROPERTY OF AMPHENOL LTW. DISCLOSURE TO THIRD PARTY HAS TO BE AUTHORIZED BY AMPHENOL LTW.



RJ45 Conn.

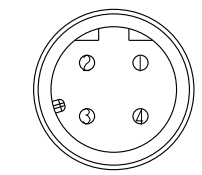
O-Ring ② Screw Nut ③

M12 Conn.

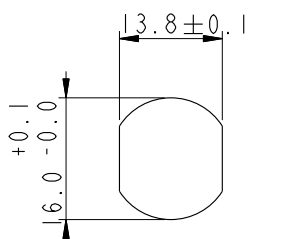


① M12-RJ Adapter

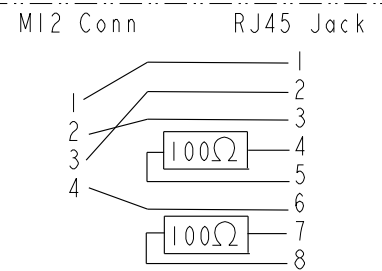
- Note:
- * \varnothing Important Dimension
 - * Waterproof Rate: IP65(MOLDING)
 - * Waterproof Rate: IP68(M12)
(Under Water 1M 24 hours)
 - * Pin: Copper Alloy, Gold Plated
 - * Nut: Zinc Alloy, Nickel Plated
 - * Shield: Copper Alloy, Nickel Plated
 - * O-Ring: Silicone, UL94V-0, Gray.
 - * Jack: PBT, Black.
 - * Housing: Nylon+GF, Black.
 - * Panel Thickness Max: 5.0mm



Pin Assignments Front View



M12 Recommended Panel Cut-Out



Circuit Diagram

UNIT:mm

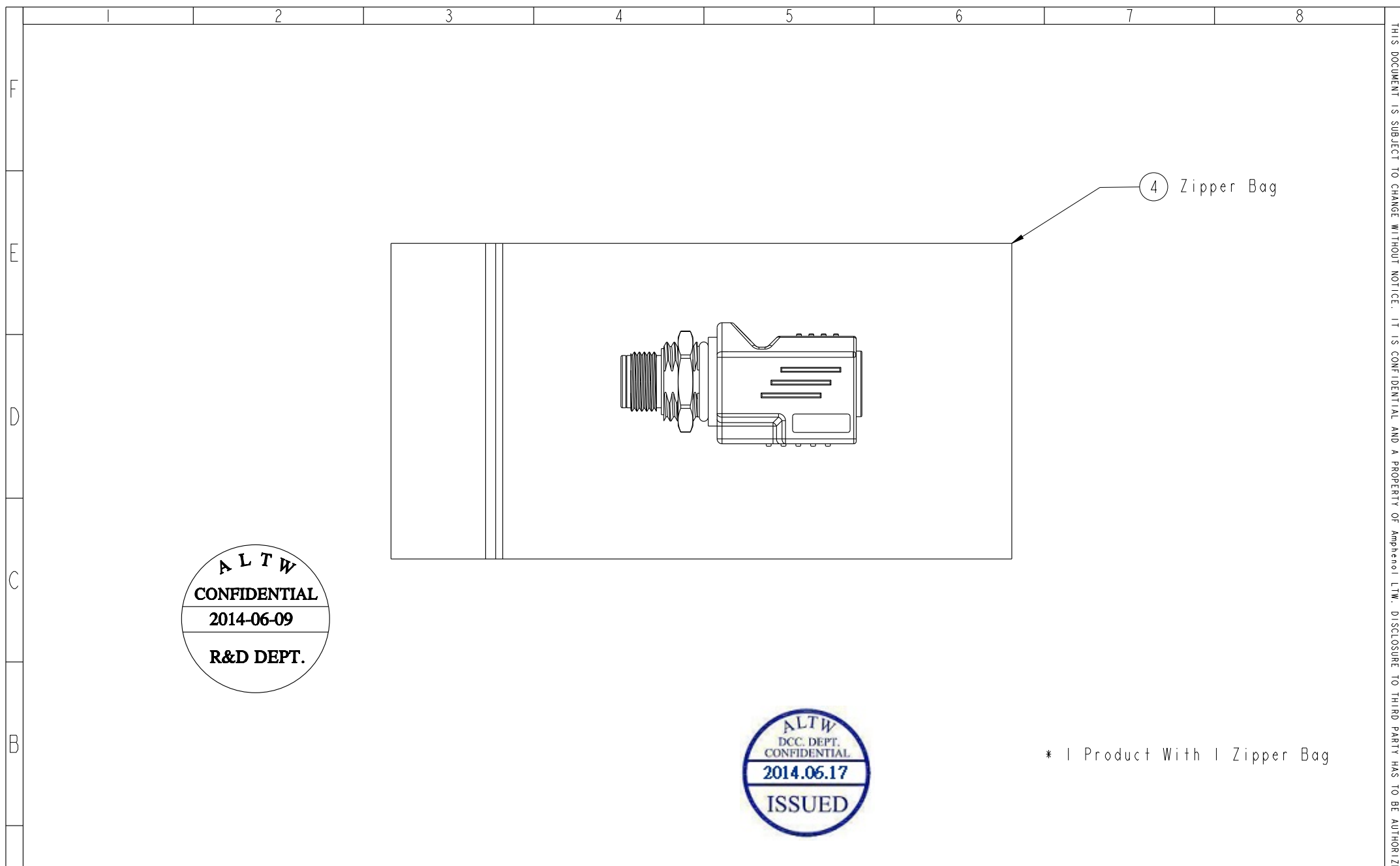
TOLERANCE $\pm 0.5\text{mm}$

TITLE ADAPTOR, SHIELDED M12 D CODE TO RJ45			
SCALE 1:1	SIZE A4	SHEET 1 OF 2	
REV. A	WC-REV. A.1	QC: Inspection item	

Amphenol LTW
安費諾亮泰企業股份有限公司

ITEM NO. RJS-12D04FM-LS8002	DRAWN BY Tony_leng	DATE 2014-06-09
DWG NO. RJS-12D04FM-LS8002	CHECKED BY Jimmy	DATE 2014-06-09
CUSTOMER ALTW	APPROVED BY Jo-anne	DATE 2014-06-09

THIS DOCUMENT IS SUBJECT TO CHANGE WITHOUT NOTICE. IT IS CONFIDENTIAL AND A PROPERTY OF AMPHENOL LTW. DISCLOSURE TO THIRD PARTY HAS TO BE AUTHORIZED BY AMPHENOL LTW.



ALTW
CONFIDENTIAL
 2014-06-09
R&D DEPT.

ALTW
 DCC. DEPT.
CONFIDENTIAL
 2014.06.17
ISSUED

* 1 Product With 1 Zipper Bag

UNIT:mm TOLERANCE $\pm 0.5\text{mm}$	 	TITLE ADAPTOR, SHIELDED M12 D CODE TO RJ45	<h2 style="margin: 0;">Amphenol LTW</h2> <p style="margin: 0;">安費諾亮泰企業股份有限公司</p>	ITEM NO RJS-12D04FM-LS8002	DRAWN BY Tony_leng	DATE 2014-06-09
	SCALE 1:1 SIZE A4 SHEET 2 OF 2		@CC: Inspection item	DWG NO RJS-12D04FM-LS8002	CHECKED BY Jimmy	DATE 2014-06-09
	REV. A	WC-REV. A.1		CUSTOMER ALTW	APPROVED BY Jo-anne	DATE 2014-06-09