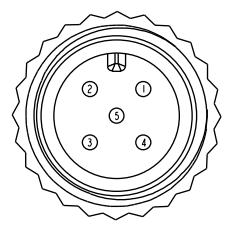
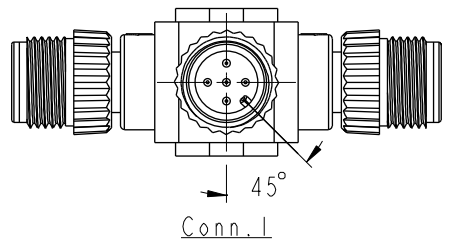
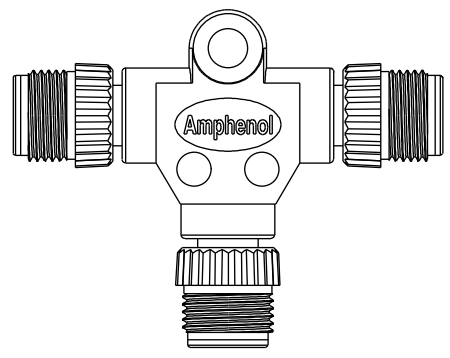
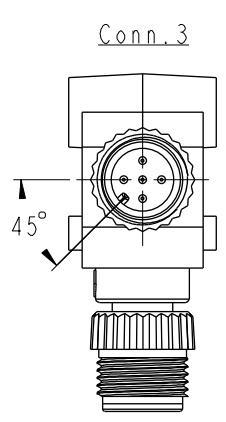
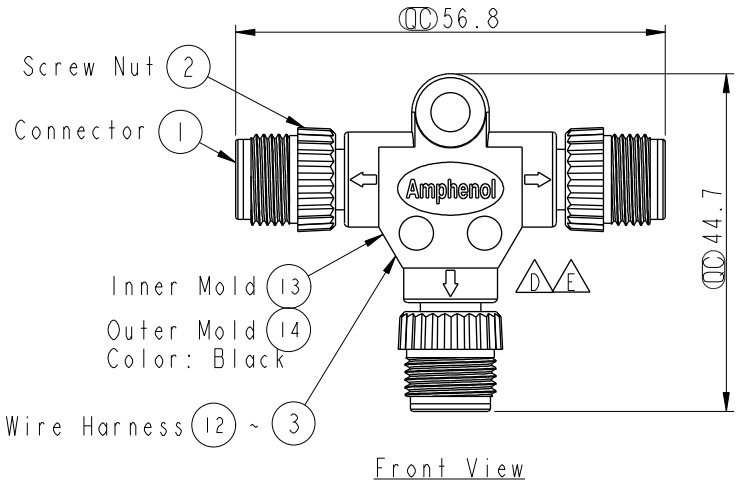
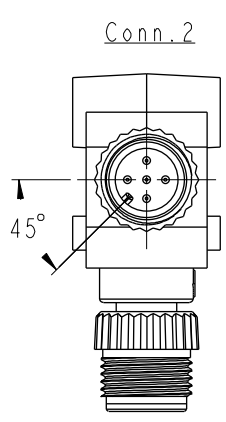


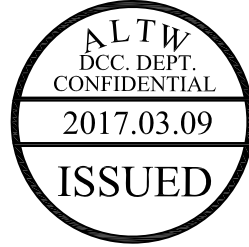
REV.	ECN NO.	DATE	SIGN	DESCRIPTION
C	LE3-910025	2009/01/06	Vicky	Modify the Wire Harness
D	LEN1350142	2013/05/08	Lu Di	Change Logo
E	LE31730072	2017/03/02	Ruru	Change Outer Mold Design



Pin Assignments
Front View

Blue (24AWG) 藍	5	5	5
White (24AWG) 白	4	4	4
Black (22AWG) 黑	3	3	3
Red (22AWG) 紅	2	2	2
Green (24AWG) 綠	1	1	1
Wire Color	Conn.1	Conn.2	Conn.3

△ Pin Out



- Note:
- * \varnothing Important Dimension
 - * Waterproof Rate: IP68
In 1 meter water within 24 hours
 - * Connector: PU, Black
 - * O- Ring: Viton, Green
 - * Screw Nut: Nylon+GF, Black
 - * Pin: Copper Alloy, Gold Plated
 - * Wire Harness: UL1061 24AWG, Green, White, Blue
 - * Wire Harness: UL1061 22AWG, Red, Black

UNIT:mm	
TOLERANCE	$\pm 0.5mm$ $\triangle B$

TITLE M12 Conn T Adaptor $\triangle C$ MMM Conn MMM Pin, 5Pin			
SCALE 1:1	SIZE A4	SHEET 1 OF 1	
REV. E	WC-REV. A.1	\varnothing : Inspection item	

Amphenol LTW
安費諾亮泰企業股份有限公司

ITEM NO PS-050505-MMM-TS001	DRAWN BY Ruru	DATE 2017-03-02
DWG NO PS-050505-MMM-TS001	CHECKED BY Rita	DATE 2017-03-02
CUSTOMER ALTW	APPROVED BY Max	DATE 2017-03-02

THIS DOCUMENT IS SUBJECT TO CHANGE WITHOUT NOTICE. IT IS CONFIDENTIAL AND A PROPERTY OF Amphenol LTW. DISCLOSURE TO THIRD PARTY HAS TO BE AUTHORIZED BY Amphenol LTW.