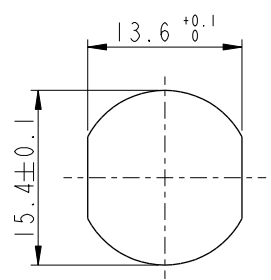


THIS DOCUMENT IS SUBJECT TO CHANGE WITHOUT NOTICE. IT IS CONFIDENTIAL AND A PROPERTY OF Amphenol LTW. DISCLOSURE TO THIRD PARTY HAS TO BE AUTHORIZED BY Amphenol LTW.

REV.	ECN NO.	DATE	SIGN	DESCRIPTION
D	C201542	2020/10/07	Vicky	$\triangle D$ X3
E	C210025	2021/01/19	Vicky	$\triangle E$ X2
F	C210309	2021/03/03	Ruru	$\triangle F$ X2

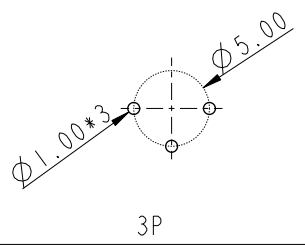
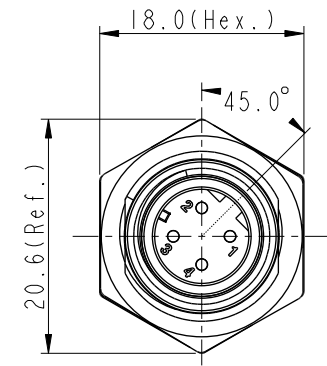
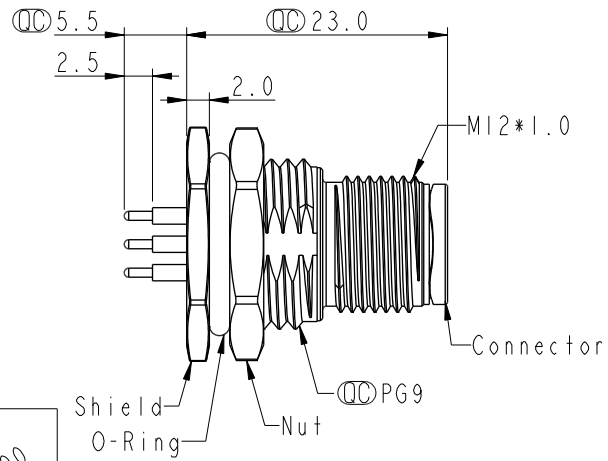
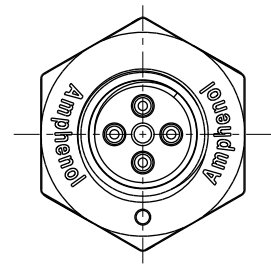


Recommended Panel Cut-Out

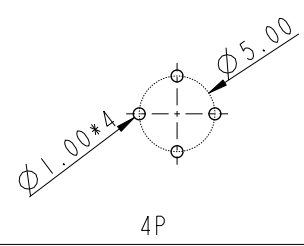
$\triangle B$

$\triangle D$  M12D-XXPMMP-SF8001

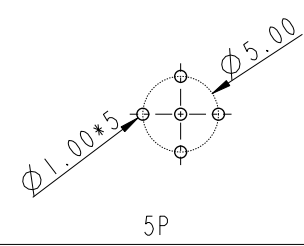
XX: No. Of Pin



3P

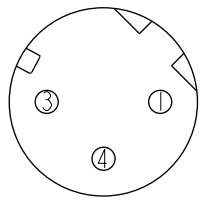


4P

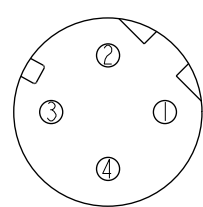


5P

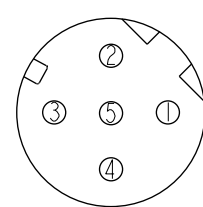
PCB Layout



3P



4P



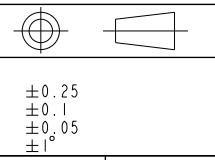
5P

Pin Assignment Front View

- $\triangle D$   $\triangle F$  Note:
- \* RoHS Compliant
  - \*  $\text{⌀}$  Important dimension
  - $\triangle C$  \* Waterproof rate: IPX8, unmated 1m/24h  
IPX9K, unmated
  - \* Connector
  - Housing: Thermoplastic, Black
  - Pin: Copper alloy, Gold plated
  - Shield: Metal
  - $\triangle E$  \* Nut: Metal
  - \* O-Ring: Rubber, Black
  - \* For panel thickness max: 4.5mm
  - \* Nut is packed separately in pe bag

UNIT: mm

TOLERANCE	
.X	±0.25
.XX	±0.1
.XXX	±0.05
ANGLES	±1°



TITLE N SEN, M12 D, SCREW RECEPTACLE, M, M, PCB S $\triangle F$			
SCALE 2:1	SIZE A4	SHEET 1 OF 1	
REV. F	WC-REV. A.5	$\text{⌀}$ : Inspection item	

**Amphenol LTW**  
安費諾亮泰企業股份有限公司

ITEM NO.	DWG NO.
	$\triangle D$ M12D-XXPMMP-SF8001
CUSTOMER	ALTW

DRAWN BY	Yulong_wang
CHECKED BY	Jinhai
APPROVED BY	Jerry

DATE	2016-08-24
DATE	2016-08-24
DATE	2016-08-24