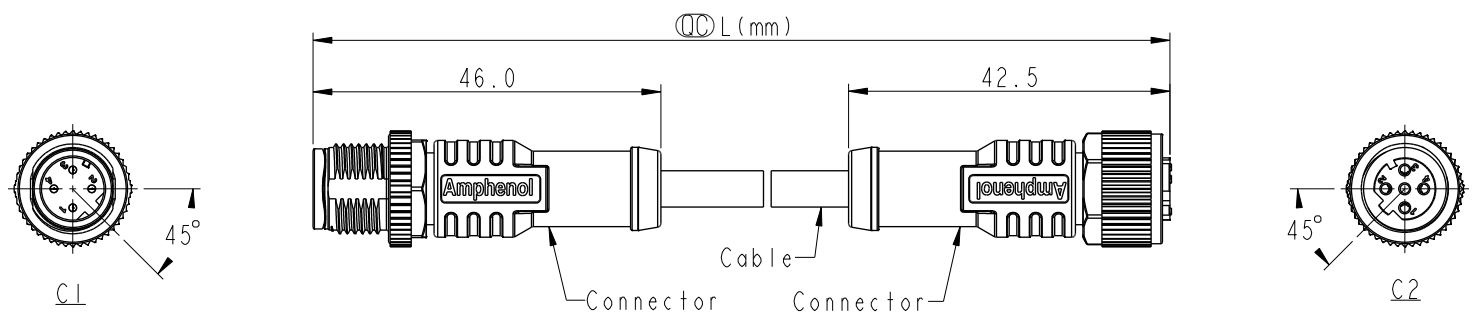
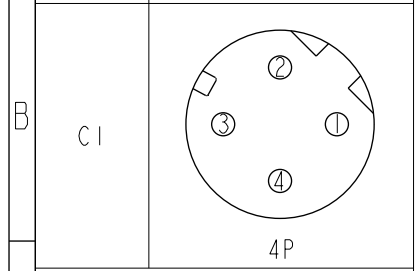
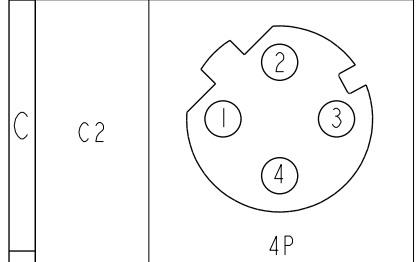


THIS DOCUMENT IS SUBJECT TO CHANGE WITHOUT NOTICE. IT IS CONFIDENTIAL AND A PROPERTY OF Amphenol LTW. DISCLOSURE TO THIRD PARTY HAS TO BE AUTHORIZED BY Amphenol LTW.

REV.	ECN NO.	DATE	SIGN	DESCRIPTION
B	C201784	2020/11/13	Ruru	$\triangle B$ X3
C	C210235	2021/03/25	Ruru	$\triangle C$ X2

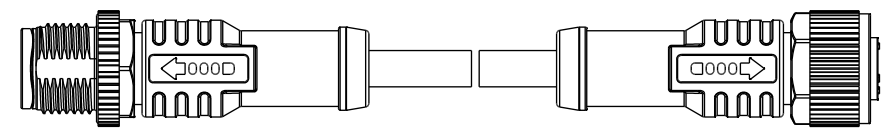


Pin Out	Wire Color	Wire Color (Chinese)
5	--	--
4	Black	黑
3	Blue	藍
2	White	白
1	Brown	棕



Pin Assignments Front View

UNIT:mm	
TOLERANCE	$\pm 0.5$ mm



$\triangle B$  M12DXXML-12DFL-SBXXX

XX: No. Of Pin

XXX: 0.5~99Meters  
 A05: 0.5 Meter  
 1: 01 Meter  
 2: 02 Meters  
 :  
 99: 99 Meters

Note:  $\triangle B$   $\triangle C$

- \* RoHS Compliant
- \*  $\odot$  Important dimension
- \* C1

Waterproof rate: IPX8, mated 1m/24h  
 IPX9K, mated

Housing: Thermoplastic, Black  
 Pin: Copper alloy, Gold plated  
 Nut: Metal  
 Outer mold: Thermoplastic, Black

- \* C2

Waterproof rate: IPX8, mated 1m/24h  
 IPX9K, mated

Housing: Thermoplastic, Black  
 Pin: Copper alloy, Gold plated  
 O-Ring: Rubber, Green  
 Nut: Metal  
 Outer mold: Thermoplastic, Black

- \* Cable: UL20549, 22#4C, OD=4.0mm, PUR Jacket, Black
- \* Cable length tolerance: 0.5M < L  $\leq$  1M: +60/-0 mm  
 1M < L  $\leq$  3M: +120/-0 mm  
 3M < L  $\leq$  5M: +160/-0 mm  
 5M < L  $\leq$  10M:  $\pm 100$  mm  
 10M < L  $\leq$  20M:  $\pm 200$  mm  
 20M < L  $\leq$  30M:  $\pm 300$  mm  
 30M < L  $\leq$  99M:  $\pm 500$  mm

TITLE ACC, SEN, D Code, DB-ENDED MF $\triangle C$		
SCALE 1:2	SIZE A4	SHEET 1 OF 1
REV. C	WC-REV. A.5	$\odot$ : Inspection item

**Amphenol LTW**  
 安費諾亮泰企業股份有限公司

ITEM NO	DRAWN BY Ruru	DATE 2018-12-11
DWG NO $\triangle B$ M12DXXML-12DFL-SBXXX	CHECKED BY Rita	DATE 2018-12-11
CUSTOMER ALTW	APPROVED BY Max	DATE 2018-12-11