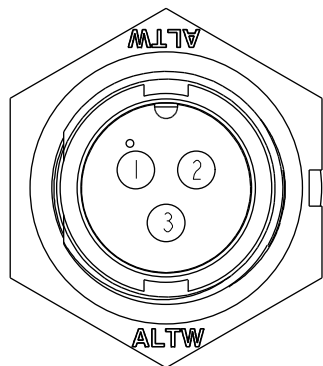
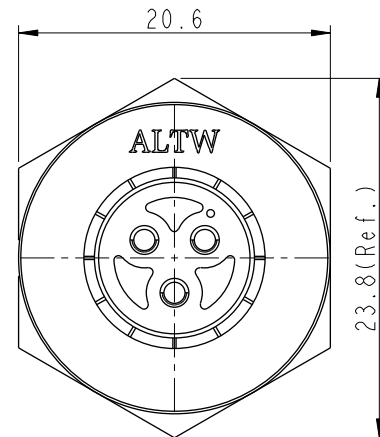
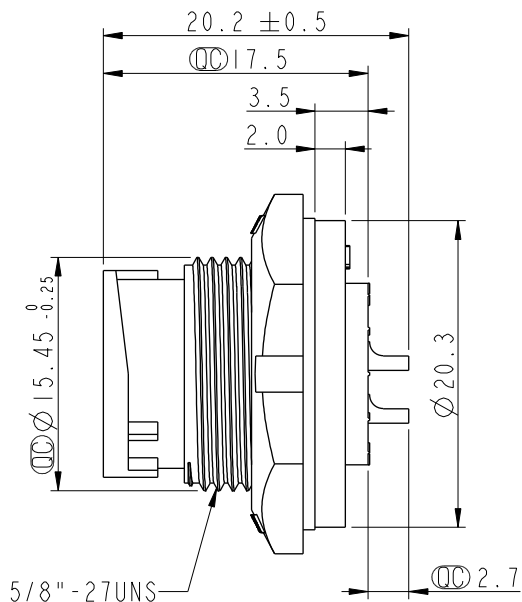
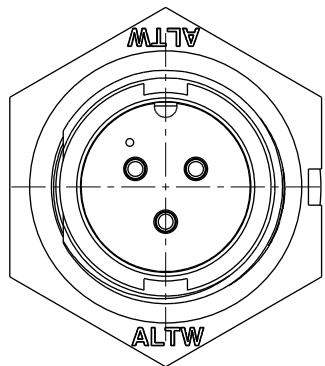


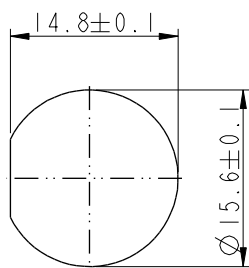
THIS DOCUMENT IS SUBJECT TO CHANGE WITHOUT NOTICE. IT IS CONFIDENTIAL AND A PROPERTY OF Amphenol LTW. DISCLOSURE TO THIRD PARTY HAS TO BE AUTHORIZED BY Amphenol LTW.

REV.	ECN NO.	DATE	SIGN	DESCRIPTION
A	Initial Release	2013/11/04	Ann	New Item
B	C190315	2019/03/19	Ruru	Modify Note & Add QC Dimension

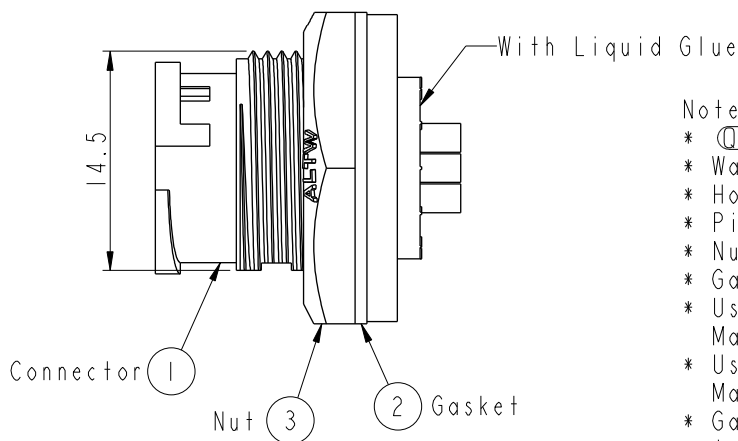
**ALTW**  
 CONFIDENTIAL  
 2019-03-19  
 R&D DEPT.



Pin Assignments  
Front View



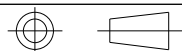
Recommended Panel  
Cut-Out



Note: **B**

- \* **Ⓞ** Important Dimension
- \* Waterproof Rate: IP67, Unmated
- \* Housing: Thermoplastic, Black
- \* Pin: Copper Alloy, Gold Plated
- \* Nut: Thermoplastic, Black
- \* Gasket: Rubber, Gray
- \* Use with waterproof cap or dust cap  
Maximum Panel Thickness: 2.8mm
- \* Use without waterproof cap or dust cap  
Maximum Panel Thickness: 4.0mm
- \* Gasket and Nut are packed separately in PE bags

UNIT:mm



TOLERANCE  
 .X ±0.25  
 .XX ±0.1  
 .XXX ±0.05  
 ANGLES ±1°

TITLE Standard CNC Pin Panel Lock 3Pin M Conn M Pin			
SCALE 2:1	SIZE A4	SHEET 1 OF 1	
REV. B	WC-REV. A.4	<b>Ⓞ</b> : Inspection item	

**Amphenol LTW**  
 安費諾亮泰企業股份有限公司

ITEM NO IBD-03PMMS-LC7001	DRAWN BY Ruru	DATE 2019-03-19
DWG NO IBD-03PMMS-LC7001	CHECKED BY Rita	DATE 2019-03-19
CUSTOMER ALTW	APPROVED BY Max	DATE 2019-03-19