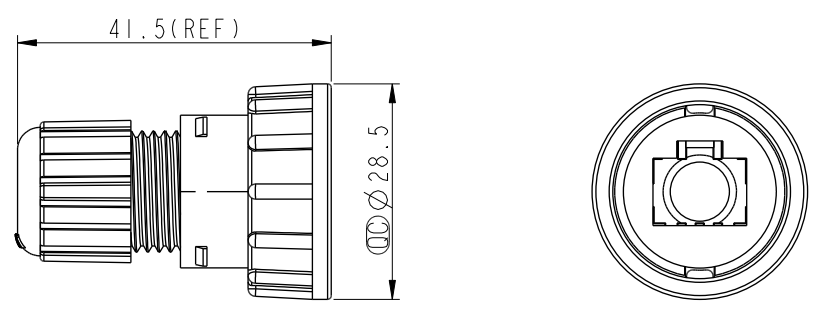
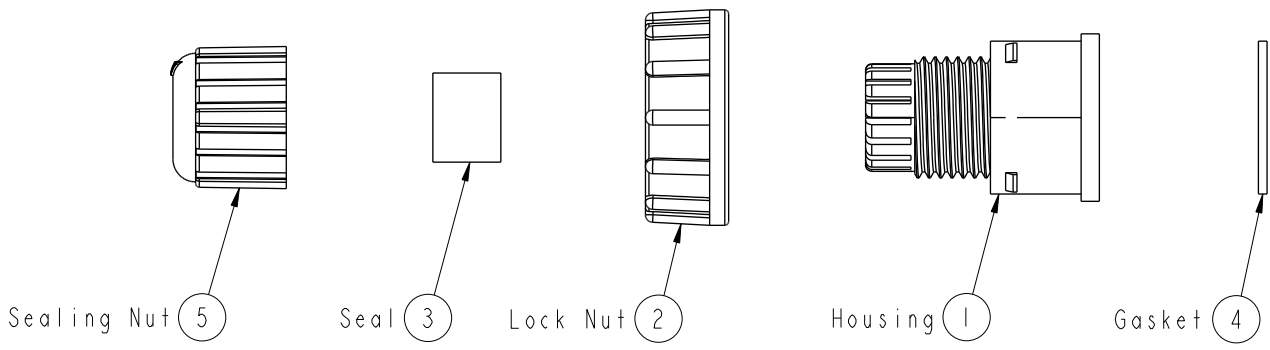


THIS DOCUMENT IS SUBJECT TO CHANGE WITHOUT NOTICE. IT IS CONFIDENTIAL AND A PROPERTY OF AMPHENOL LTW. DISCLOSURE TO THIRD PARTY HAS TO BE AUTHORIZED BY AMPHENOL LTW.

REV.	ECN NO.	DATE	SIGN	DESCRIPTION
B	LE31490147	2014/09/11	Joyy	Change to 94V0 material
C	C201856	2020/08/05	Vicky	△C*2



- △ Note:
- * QC Important Dimension To Check
 - * Waterproof Rate: IP67, Mated
 - △B * Housing: Thermoplastic, Black
 - △B * Lock Nut: Thermoplastic, Black
 - △B * Gasket: Rubber, Gray
 - △B * Sealing Nut: Thermoplastic, Black
 - * Seal: Rubber, Gray
 - * Seal For Cable OD $\varnothing 4.5\text{mm} - \varnothing 7.5\text{mm}$

A	UNIT: mm	TITLE RJ45 ASSEMBLY LOCK 00 M CONN M PIN			Amphenol LTW 安費諾亮泰企業股份有限公司	ITEM NO	DRWN BY	DATE
	TOLERANCE .X ±0.25 .XX ±0.1 .XXX ±0.05 ANGLES ±1°	SCALE 1:1	SIZE A4	SHEET 1 OF 1		DWG NO RJ-00BMMA-LL7001	CHECKED BY Tom	DATE 2014-09-11
	REV. C	WC-REV. A.5	QC: Inspection item			CUSTOMER ALTW	APPROVED BY Victor	DATE 2014-09-11