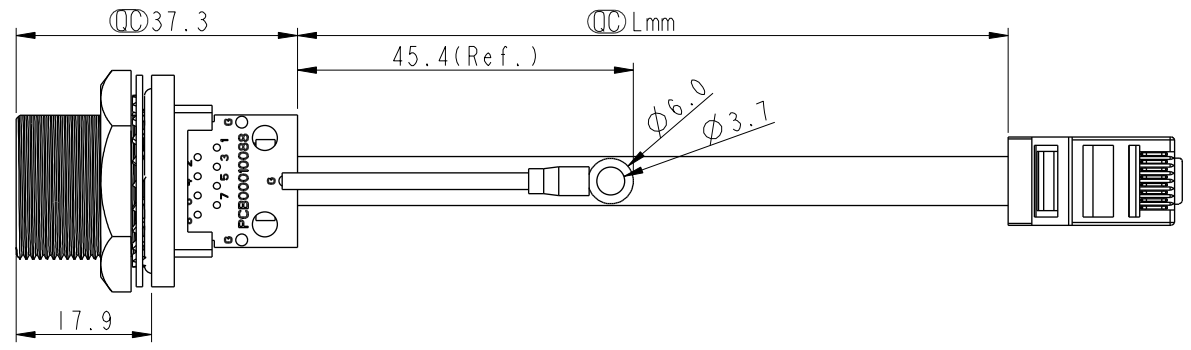
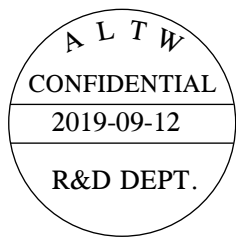
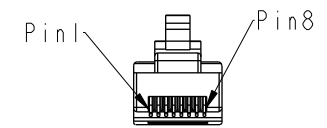
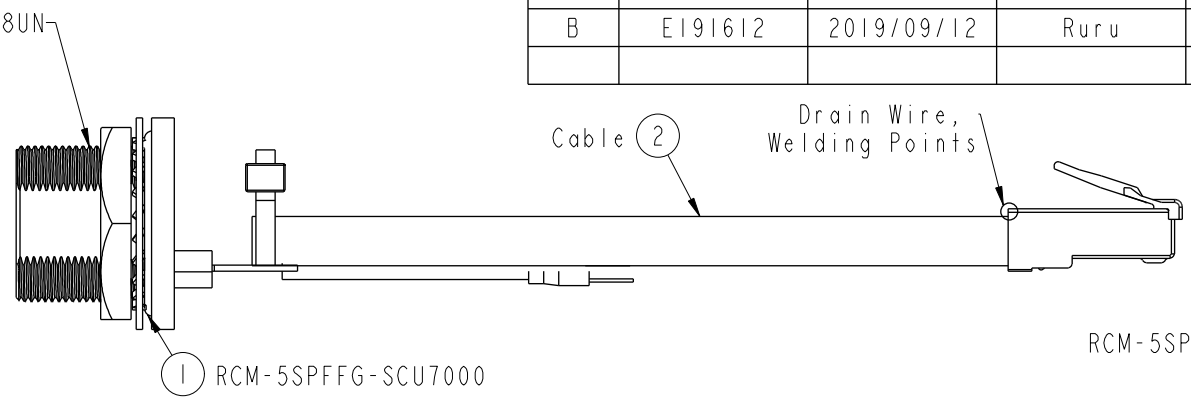
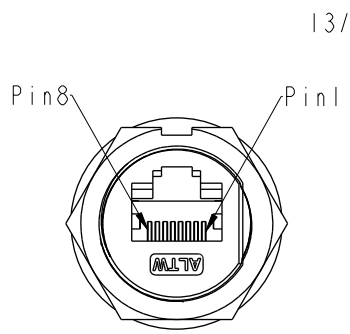


THIS DOCUMENT IS SUBJECT TO CHANGE WITHOUT NOTICE. IT IS CONFIDENTIAL AND A PROPERTY OF Amphenol LTW. DISCLOSURE TO THIRD PARTY HAS TO BE AUTHORIZED BY Amphenol LTW.

REV.	ECN NO.	DATE	SIGN	DESCRIPTION
A	Initial Release	2014/06/24	Tom	Change Rev. I To Rev.A
B	E191612	2019/09/12	Ruru	Drawing Code Unified Writing

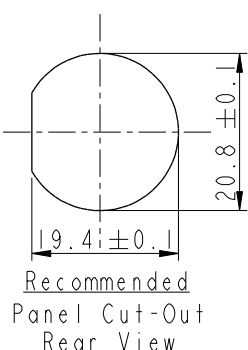


RCM-5SPFFG-SCU7BXX Δ

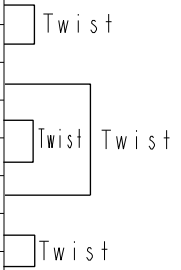
- 10: 100mm
- 15: 150mm
- 20: 200mm
- A0: 1000mm

Cable Pitch Unit=50mm
Cable Length(L): 100~1000mm

Cable Length	Tolerance
0.0~100mm	±10mm
101~300mm	±15mm
301~1000mm	±20mm

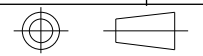


Ground	Wire (20AWG)	Green	Terminal
Shield	Drain Wire	接地線	Shield
8	Brown	棕	8
7	White/Brown	白/棕	7
6	Green	綠	6
5	White/Blue	白/藍	5
4	Blue	藍	4
3	White/Green	白/綠	3
2	Orange	橘	2
1	White/Orange	白/橘	1
Jack	Wire Color		Plug



- Note:
- * Ⓞ Important Dimension
 - * Waterproof Rate: IP67 Unmated
 - * Panel Nut: Zinc Alloy, Nickel Plated
 - * Spring Washer: SUS304
 - * O-Ring: Silicone, Gray_Black
 - * Housing: Zinc Alloy, Nickel Plated
 - * Cable: CAT5E FTP 24#*4P+D+AL/MY, OD=6.5mm, Black
 - * Ground Wire: UL1015, 20#, Green
 - * Ground Terminal: Brass, Tin Plated, Thickness: 0.4mm
 - * Use With Waterproof Cap Or Dust Cap
For Panel Thickness Max: 3.0mm
 - * Use Without Waterproof Cap Or Dust Cap
For Panel Thickness Max: 4.2mm
 - * Recommend Force: 8~10kg-cm

UNIT:mm



TITLE RJ45, C SIZE, CABLE UNMATED WATERPROOF

Amphenol LTW
安費諾亮泰企業股份有限公司

ITEM NO	DRAWN BY	DATE
	Ruru	2019-09-12
DWG NO	CHECKED BY	DATE
RCM-5SPFFG-SCU7BXX	Rita	2019-09-12
CUSTOMER	APPROVED BY	DATE
ALTW	Max	2019-09-12

TOLERANCE
.X ±0.25
.XX ±0.1
.XXX ±0.05
ANGLES ±1°

SCALE	SIZE	SHEET	OF
1:1	A4	1	1
REV.	WC-REV.	Ⓞ : Inspection item	
B	A.3		