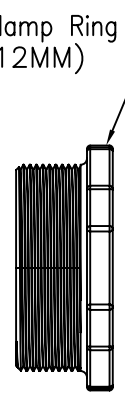
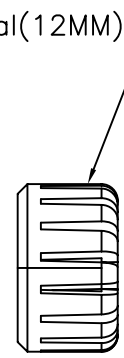
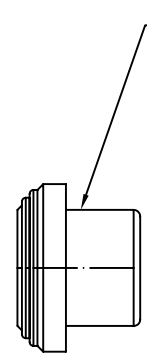
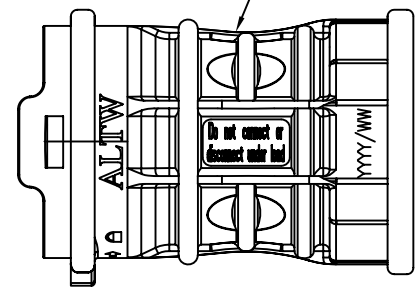
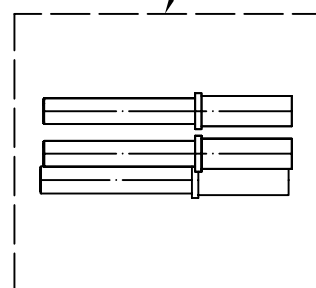
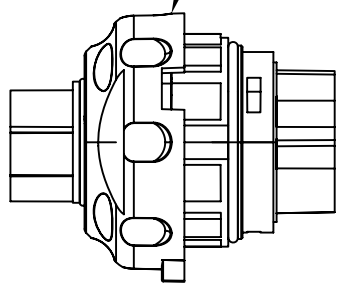


5	6	7	8
REV.	ECN NO.	DATE	SIGN
			DESCRIPTION



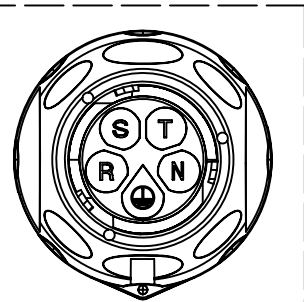
- ① F Housing
- ② O-Ring*2
- ③ O-Ring
- ④ Nut
- ⑤ Ins_Housing

- ⑥ F_Pin
- ⑦ Built-In Spring
- ⑧ PE Bag (HPE00910085)

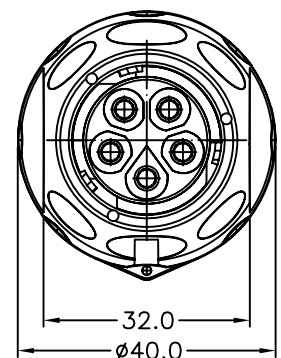


Note:

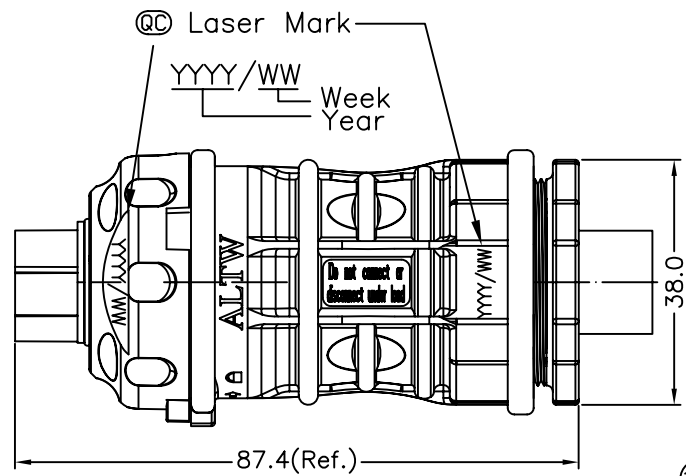
- * @C Important Dimensions To Check.(重點檢查尺寸)
- * Voltage (電壓) : AC 660V ; DC 1000V
- * Current (電流) : 25A
- * Please refer to manual for Ass'y instruction (使用方式請參閱組裝說明書)
- * Standard (認證) : ULXXXX ; CSAXXX; TUVXXXX
- * Waterproof Rate (防水等級) : IP68_3M6H(Mating對接)
- * Female Housing (母膠芯) : m-PPE(F1), Black (黑)
- * Female Pin (母端子) : Copper (銅), Tin Plated (鍍錫)
- * O-ring (O型環) : Silicone (矽樹脂), Gray (灰)
- * Cable OD range (線材範圍) : 12mm~9mm
- * Wire Size (導體尺寸) : 12AWG
- * Flame Class (防火等級) : UL94V-0
- * One Set Unassembled in one PE Bag.
- * One Set Ass'y Instructions & Tool in one PE Bag (每包袋子中含有未組裝零件, 組裝說明書及工具)



Pin Assignments Front View



Conn.



UNIT:mm	
TOLERANCE	
.X	±0.25
.XX	±0.1
.XXX	±0.05
ANGLES	±1°

TITLE		PV Connector 5Pin Cable(12mm)	
SCALE	Free	SHEET	1 OF 1
REV.	A	SIZE	A4
		@C :Inspection Item	

Amphenol LTW
安費諾亮泰企業股份有限公司

ITEM NO	LTWPWH-05BFFC-LL8002
DWG NO	LTWPWH-05BFFC-LL8002
CUSTOMER	

DRAWN BY	Micky
CHECKED BY	Kevin
APPROVED BY	Victor

DATE	2011/06/13
DATE	2011/06/13
DATE	2011/06/13

THIS DOCUMENT IS SUBJECT TO CHANGE WITHOUT NOTICE. IT IS CONFIDENTIAL AND A PROPERTY OF Amphenol LTW. DISCLOSED TO THIRD PARTY HAS TO BE AUTHORIZED BY Amphenol LTW.