

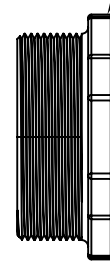
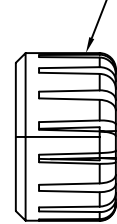
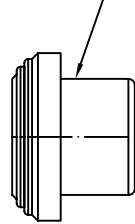
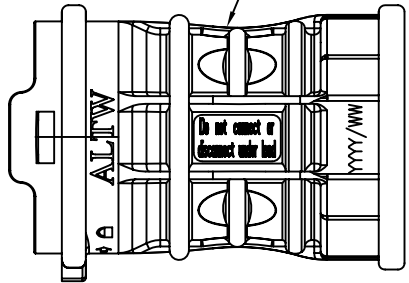
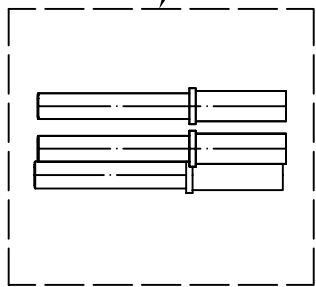
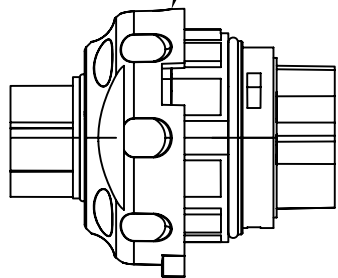


5	6	7	8
REV.	ECN NO.	DATE	SIGN

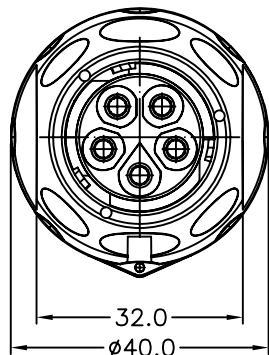
- ① F Housing
- ② O-Ring*2
- ③ O-Ring
- ④ Nut
- ⑤ Ins_Housing

- ⑥ F_Pin
- ⑦ Built-In Spring
- ⑧ PE Bag (HPE00910085)

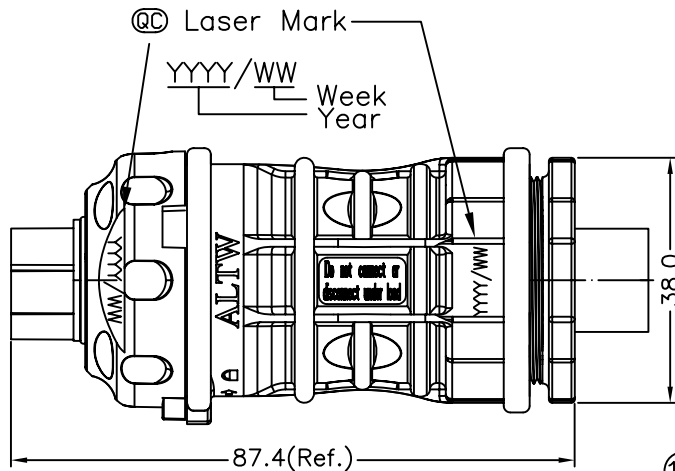
- ⑩ Seal(16MM)
- ⑪ Clamp Ring (16MM)
- ⑫ Clamp Nut (16MM)



Pin Assignments
Front View



Conn.



Note:

- * QC Important Dimensions To Check.(重點檢查尺寸)
- * Voltage (電壓) : AC 660V ; DC 1000V
- * Current (電流) : 25A
- * Please refer to manual for Ass'y instruction (使用方式請參閱組裝說明書)
- * Standard (認證) :ULXXXX ;CSAXXXX; TUVXXXXX
- * Waterproof Rate(防水等級) : IP68_3M6H(Mating對接)
- * Female Housing(母膠芯) : m-PPE(F1),Black (黑)
- * Female Pin(母端子) : Copper(銅),Tin Plated(鍍錫)
- * O-ring (O型環) : Silicone (矽樹脂),Gray (灰)
- * Cable OD range(線材範圍) : 16mm~13mm
- * Wire Size(導體尺寸) : 12AWG
- * Flame Class(防火等級) : UL94V-0
- ⑬⑭ * One Set Unassembled in one PE Bag.
- * One Set Ass'y Instructions & Tool in one PE Bag. (每包袋子中含有未組裝零件, 組裝說明書及工具)

UNIT:mm		TITLE PV Connector 5Pin Cable(16MM)
TOLERANCE .X ±0.25 .XX ±0.1 .XXX ±0.05 ANGLES ±1°	SCALE Free	SHEET 1 OF 1
REV. A	SIZE A4	QC :Inspection Item

Amphenol LTW
安費諾亮泰企業股份有限公司

ITEM NO LTWPWH-05BFFC-LL8001	DRAWN BY Micky	DATE 2011/06/13
DWG NO LTWPWH-05BFFC-LL8001	CHECKED BY Kevin	DATE 2011/06/13
CUSTOMER	APPROVED BY Victor	DATE 2011/06/13

THIS DOCUMENT IS SUBJECT TO CHANGE WITHOUT NOTICE. IT IS CONFIDENTIAL AND A PROPERTY OF Amphenol LTW. DISCLOSED TO THIRD PARTY HAS TO BE AUTHORIZED BY Amphenol LTW.

A B C D E F