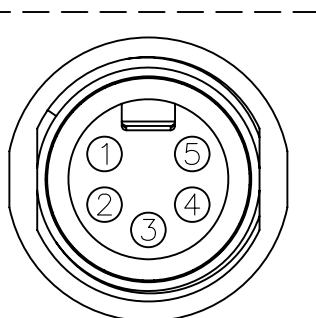
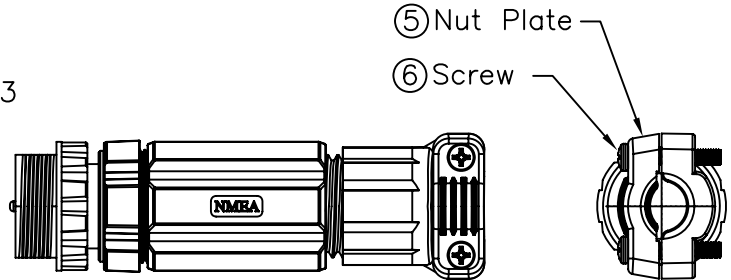
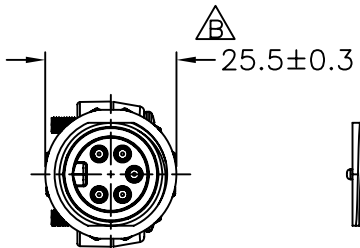
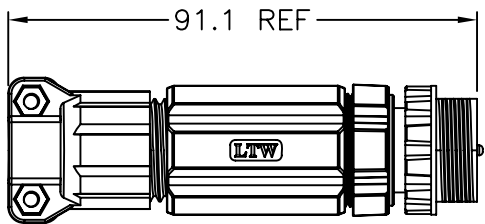
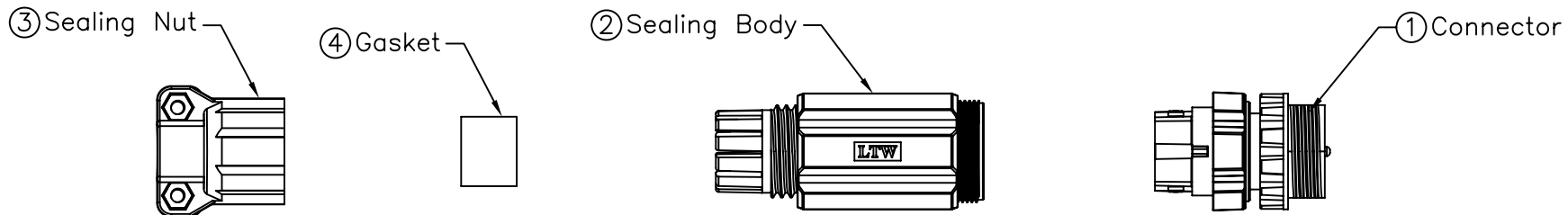


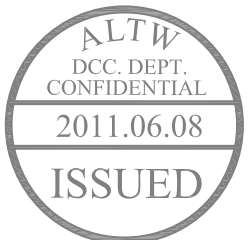
REV. B	ECN NO. LEN1160059	DATE 2011/03/04	SIGN Doreen	DESCRIPTION Change Dimension View.
--------	--------------------	-----------------	-------------	------------------------------------

THIS DOCUMENT IS SUBJECT TO CHANGE WITHOUT NOTICE. IT IS CONFIDENTIAL AND A PROPERTY OF Amphenol LTW. DISCLOSE TO THIRD PARTY HAS TO BE AUTHORIZED BY Amphenol LTW.



Conn.
Pin Assignments
Front View

Pin	Conn. Name	Pair	Wire Color	For User
5	NET-L	Signal	Blue 藍	(18AWG)
4	NET-H	Signal	White 白	(18AWG)
3	NET-C	Power	Black 黑	(15AWG)
2	NET-S	Power	Red 紅	(15AWG)
1	Shield	Drain	Bare	(18AWG)



- Note:
- * QC Important Dimension.
 - * Waterproof Rate : IP67
 - * Connector: Nylon+GF, Black
 - * Pin: Copper Alloy,Gold Plated
 - * O-Ring: Silicone, Gray.
 - * Holder: Nylon+GF, Black.
 - * Gasket: Silicone, Black.
 - * Sealing Nut: Nylon+GF, Black.
 - * Nut: ZINC,Nickel Plated
 - * Seals For Cable OD $\varnothing 8\text{mm} \sim \varnothing 12.2\text{mm}$
 - * 使用溫度 : $-20^{\circ}\text{C} \sim 70^{\circ}\text{C}$

UNIT:mm	
TOLERANCE	
.X	±0.25
.XX	±0.1
.XXX	±0.05
ANGLES	±1°

TITLE NMEA2000 Mini-C MALE SCREW-IN ASSEMBLE	
SCALE Free	SHEET 1 OF 1
REV. B	SIZE A4
QC :Inspection Item	

Amphenol LTW
安費諾亮泰企業股份有限公司

ITEM NO LTWUMN-05BMMB-SL7001
DWG NO LTWUMN-05BMMB-SL7001
CUSTOMER

DRAWN BY Doreen	DATE 2011/03/04
CHECKED BY Winnie	DATE 2011/03/04
APPROVED BY Kevin	DATE 2011/03/04